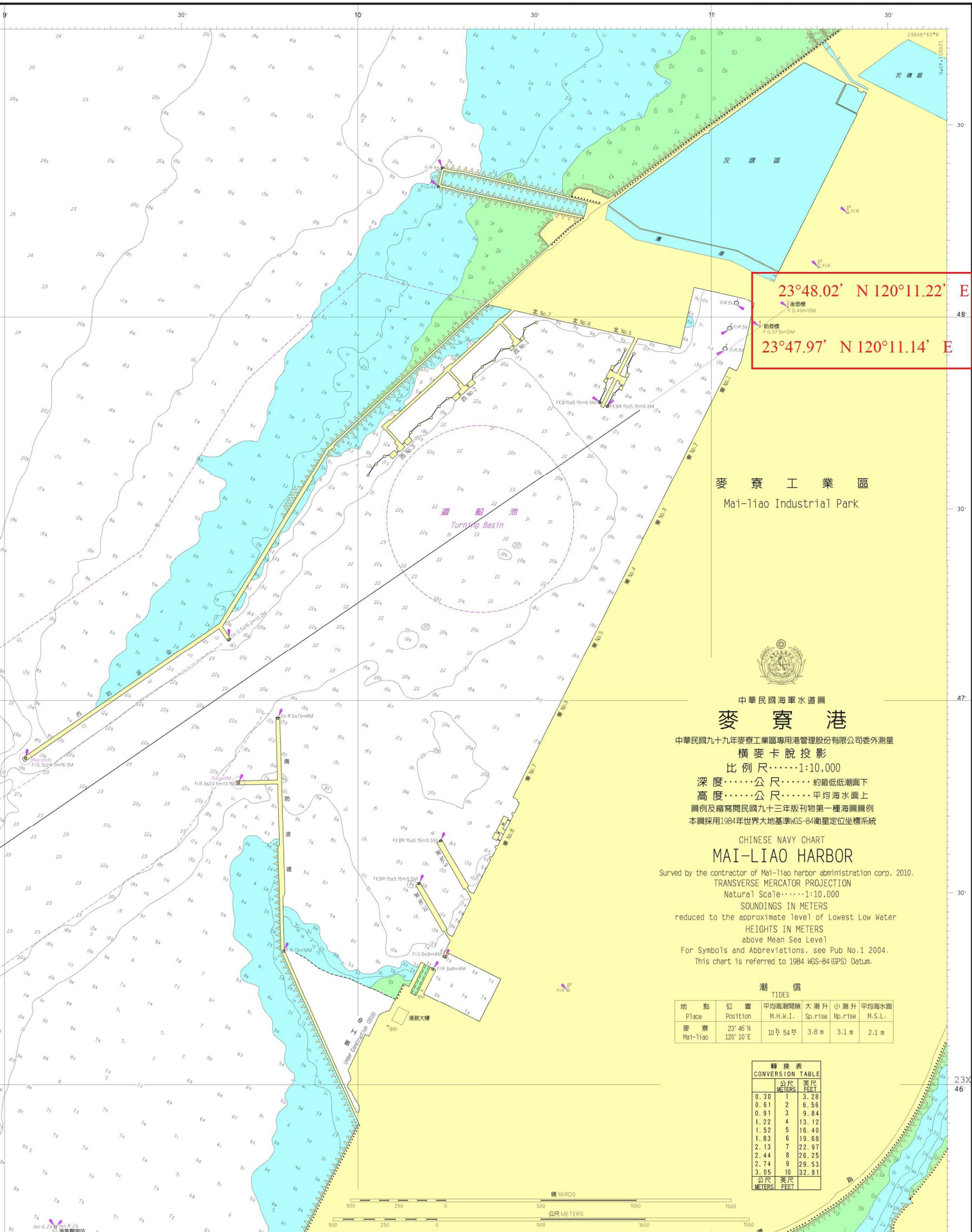


注意
航海人員不宜僅根據一圖而導航，尤其不可依賴任何浮動標誌，請隨時與海圖訂正海圖，並請參閱航海通告、航行指南、潮汐表等相關刊物，以確保航行安全。

WARNING
Mariners are advised not to rely solely on any single aid for navigation, particularly a floating aid. Consult the chart in accordance with Notice to Mariners, and refer to List of Lights, Sailing Directions, Tide Tables and related publications for details, to ensure a safe and efficient passage.



23°48.02' N 120°11.22' E
23°47.97' N 120°11.14' E

麥寮工業區
Mai-liao Industrial Park



中華民國海軍水道圖

麥寮港

中華民國九十九年麥寮工業區專用港管理股份有限公司委外測量

橫麥卡脫投影

比例尺……1:10,000

深度……公尺……約最低低潮面下

高度……公尺……平均海水面

圖例及縮寫閱民國九十三年版刊物第一種海圖圖例

本圖採用1984年世界大地基準WGS-84衛星定位坐標系統

CHINESE NAVY CHART

MAI-LIAO HARBOR

Surveyed by the contractor of Mai-liao harbor administration corp. 2010.

TRANSVERSE MERCATOR PROJECTION

Natural Scale……1:10,000

SOUNDINGS IN METERS

reduced to the approximate level of Lowest Low Water

HEIGHTS IN METERS

above Mean Sea Level

For Symbols and Abbreviations, see Pub No.1 2004.

This chart is referred to 1984 WGS-84 (GPS) Datum.

潮信

| 地點 | 位置 | 平均高潮間隔 | 大潮升 | 小潮升 | 平均海面 |
|----------|---------------------|---------------------------------|----------|----------|--------|
| Place | Position | M.H.W.L. Sp. rise | No. rise | No. rise | M.S.L. |
| 麥寮 | 23°46'N 120°10'E | 10 ^h 54 ^m | 3.8 m | 3.1 m | 2.1 m |
| Mai-liao | | | | | |

| 轉換表 | | | |
|------------------|----|--------|------|
| CONVERSION TABLE | | 公尺 | 英尺 |
| | | METERS | FEET |
| 0.30 | 1 | 3.28 | |
| 0.61 | 2 | 6.56 | |
| 0.91 | 3 | 9.84 | |
| 1.22 | 4 | 13.12 | |
| 1.52 | 5 | 16.40 | |
| 1.83 | 6 | 19.68 | |
| 2.13 | 7 | 22.97 | |
| 2.44 | 8 | 26.25 | |
| 2.74 | 9 | 29.53 | |
| 3.05 | 10 | 32.81 | |
| | | 公尺 | 英尺 |
| | | METERS | FEET |



0361A

23X
46