

表 1 南竿鄉福澳港海氣象儀器設備表

編號	觀測項目	位置	緯度	經度
A4	波流(主)	S2 碼頭/S2 碼頭西北西側約 660 公尺	26° 9 '52.56"N	119°56'8.16" E
A5	波流(副)	S2 碼頭/S2 碼頭西北西側約 690 公尺	26° 9 '52.8"N	119°56'4.8" E



圖 1 南竿鄉福澳港海氣象儀器設備位置示意圖

表 2 莒光鄉青帆港海氣象儀器設備表

編號	觀測項目	位置	緯度	經度
C1	潮位	西莒青帆港內堤頭	25°58'8.89"N	119°55'56.99"E

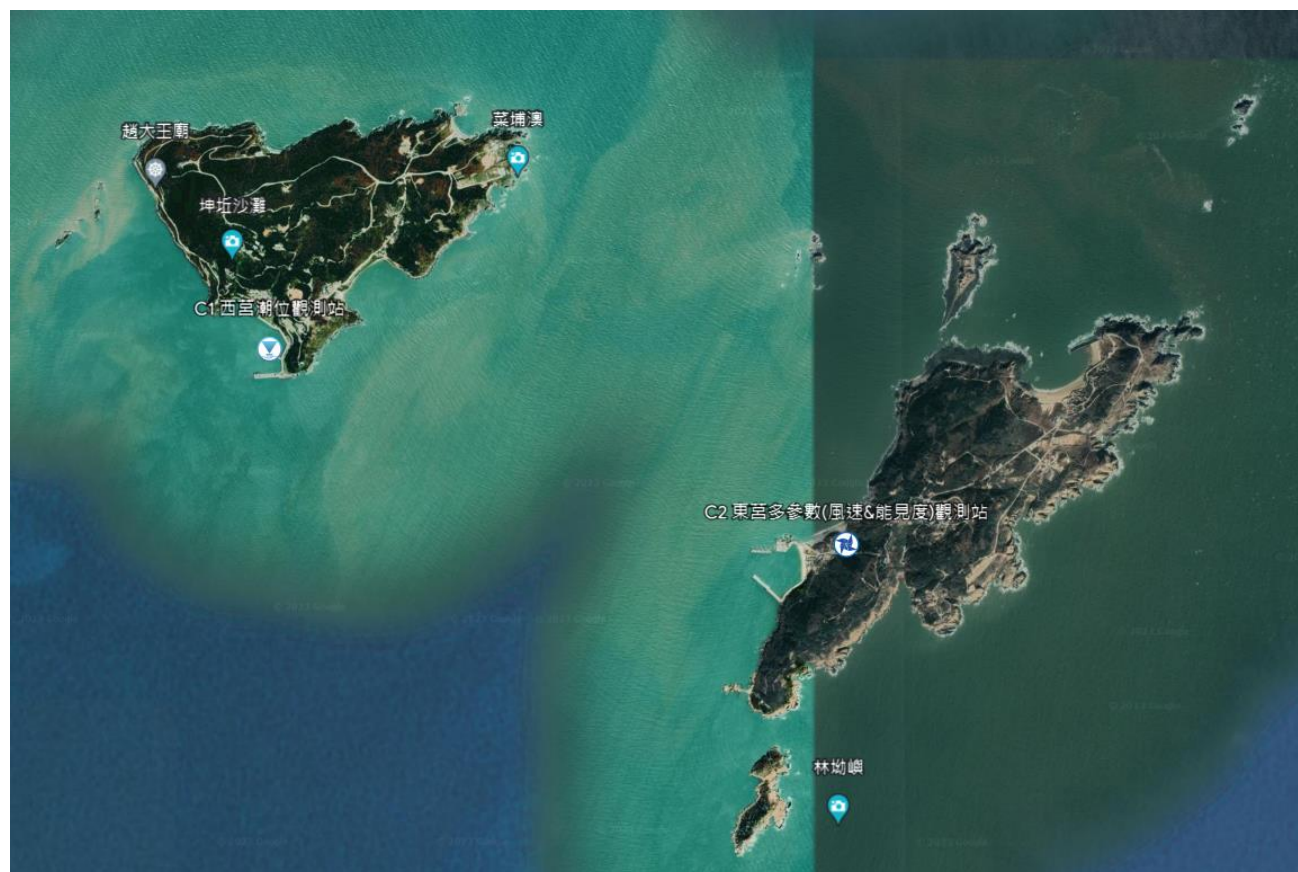


圖 2 莒光鄉海氣象儀器設備位置示意圖

表 3 東引鄉中柱港海氣象儀器設備表

編號	觀測項目	位置	緯度	經度
D3	波流	東引南碼頭港務室旁海上(新站)	26°21'50.82"N	120°28'45.24"E

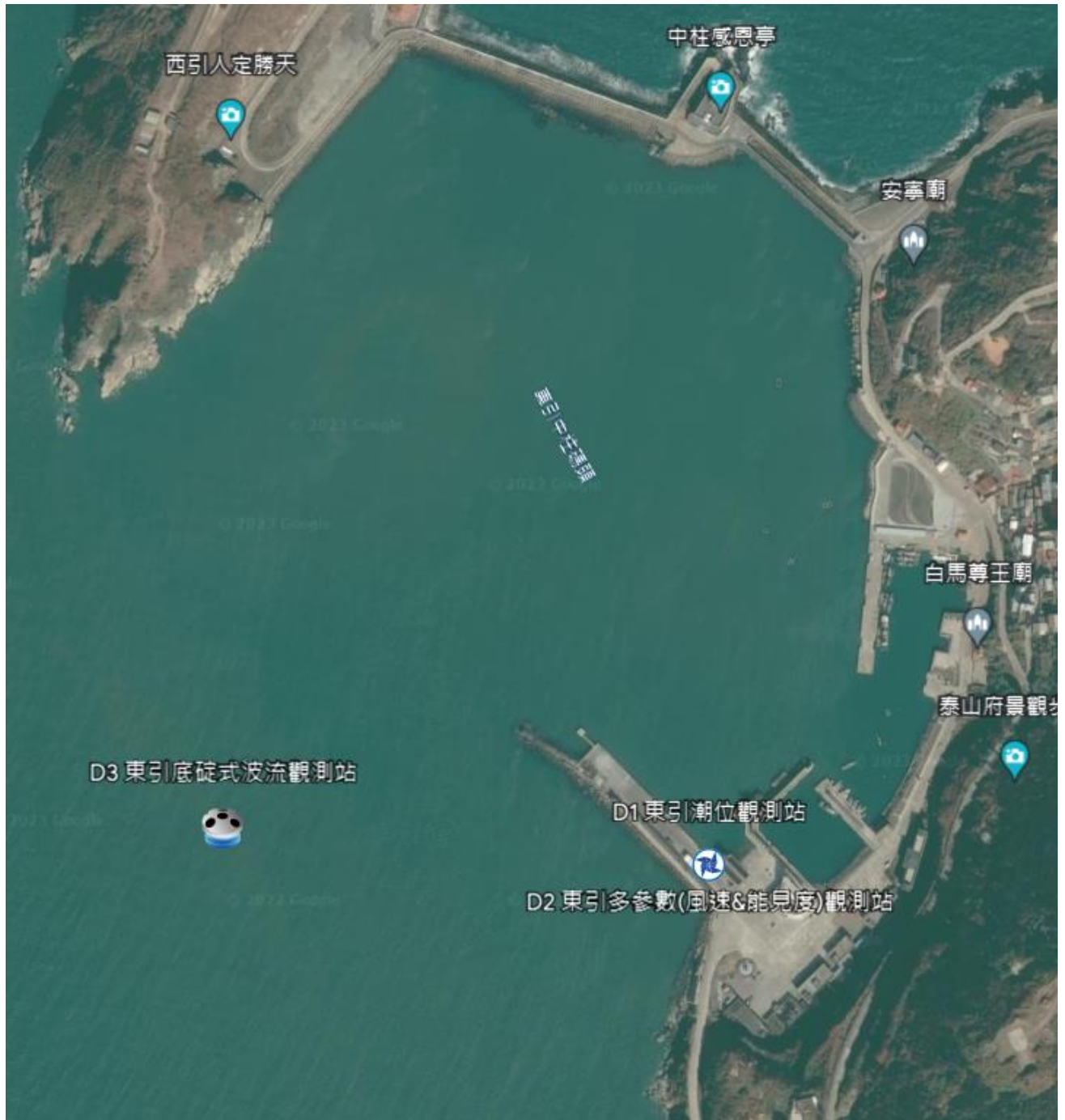


圖 3 東引鄉海氣象儀器設備位置示意圖

Table 1 Meteorological Instruments and Equipment List of Fuao Port in Nangan Township

No.	Observation Items	Location	Latitude	Longitude
A4	Wave & Current	Northwest side of S2 Pier about 660 meters	26° 9' 52.56"N	119° 56' 8.16" E
A5	Wave & Current	Northwest side of S2 Pier about 690 meters	26° 9' 52.8"N	119° 56' 4.8" E

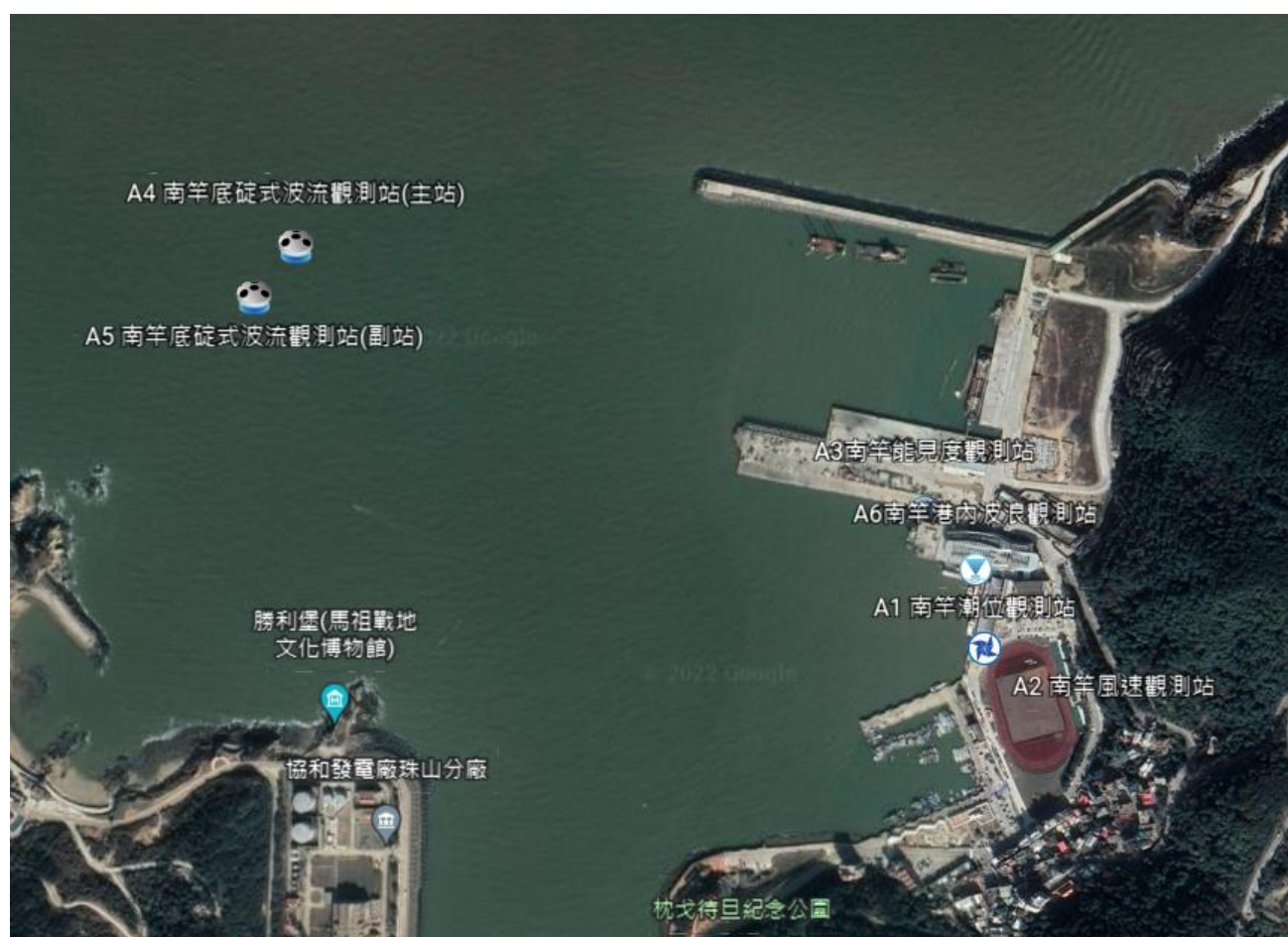


Figure 1 Schematic diagram of the location of meteorological instruments and equipment in Fuao, Nangan Township

Table 2 Meteorological Instruments and Equipment List of Qingfan Port in Juguang Township

No.	Observation Items	Location	Latitude	Longitude
C1	Tide	Breakwater of Qingfan Harbor, Xiju	25° 58' 8.89"N	119° 55' 56.99"E

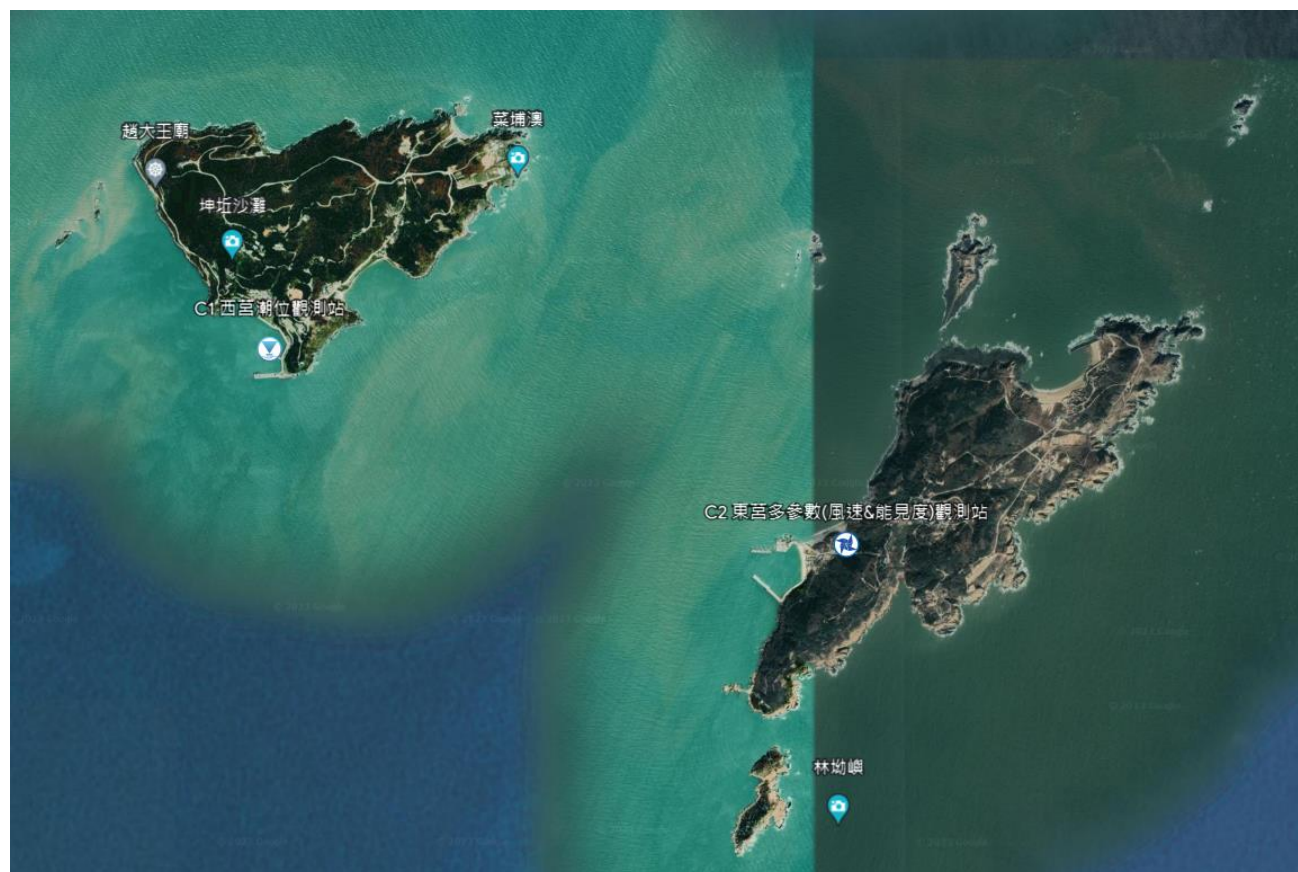


Figure 2 Schematic location of meteorological instruments and equipment in Juguang Township

Table 3 Meteorological Instruments and Equipment List of Zhongzhu Port in Dongyin Township

No.	Observation Items	Location	Latitude	Longitude
D3	Wave & Current	West side of South Pier about 400 memters	26°21'50.82"N	120°28'45.24"E

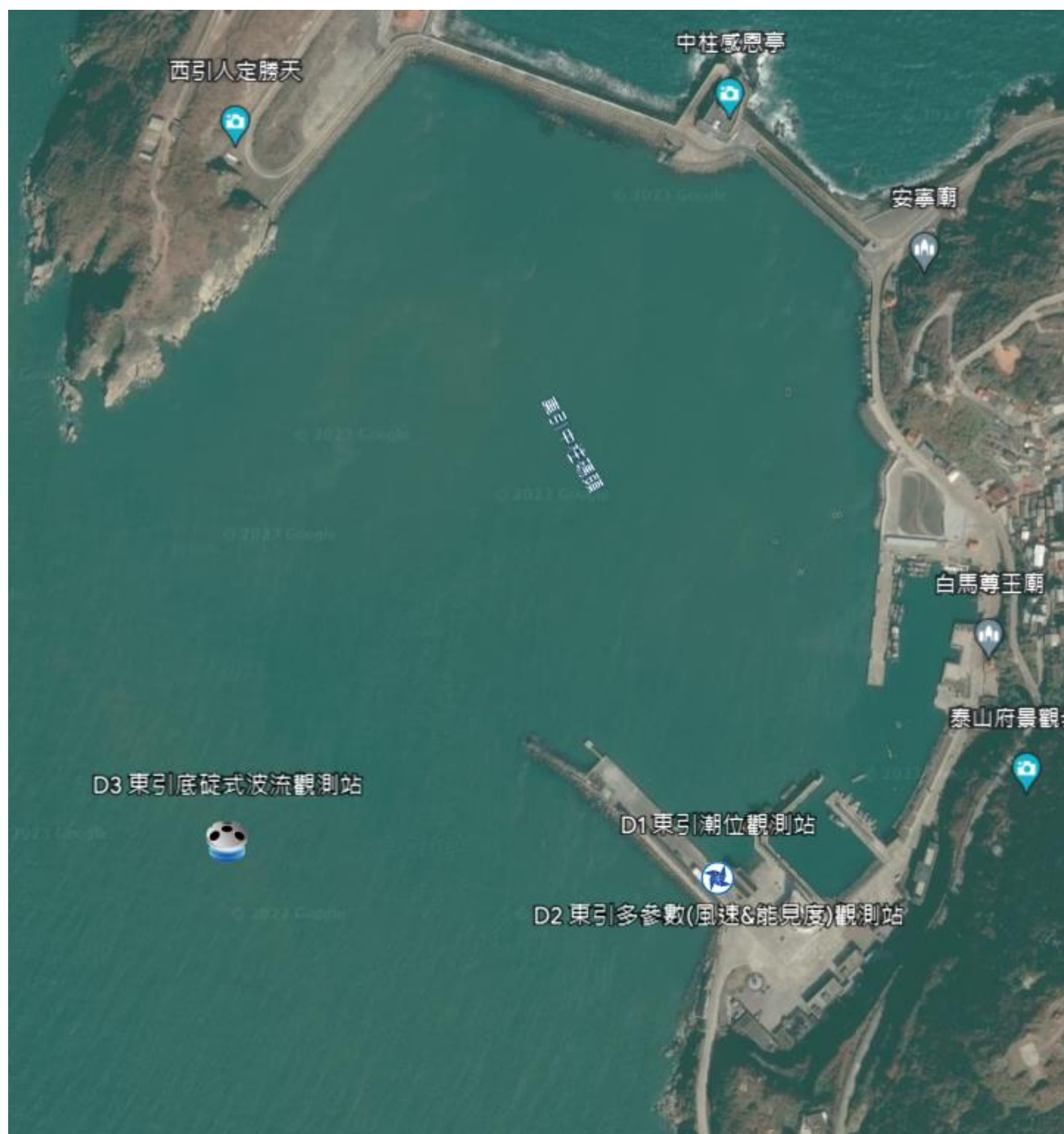


Figure 1 Schematic diagram of the location of meteorological instruments and equipment in Zhongzhu, Dongyin Township