

交通部航港局

Maritime and Port Bureau, MOTC

106248 臺北市和平東路 3 段 1 巷 1 號

No. 1, Ln 1, Sec 3, Heping E. Rd.,

Da'an Dist.,

Taipei City 106248



Jan De Nul n.v.

TAIWAN BRANCH

Hung Kuo Building

5F, No. 167, DunHua North Road

Songshan District, Taipei City 105 | Taiwan (R.O.C.)

T +886 2 8712 0616 F +886 2 8712 1678

taipei.office@jandenul.com | www.jandenul.com

Our ref.: 0158.L.JDN3973.MOTC.ADRI

副本 交通部航港局北部航務中心

Copy MOTC Northern Navigation Centre

交通部航港局中部航務中心

MOTC Central Navigation Centre

交通部航港局南部航務中心

MOTC South Navigation Centre

交通部航港局東部航務中心

MOTC West Navigation Centre

Contact: Adriaan DE BOURGAAFF

聯絡人: +886 928 012 016

Date: Aug/03/2021

專案 Project: 海能離岸風場專案-基礎及電纜供應

Formosa 2 Offshore Wind Farm Project -Foundations & Cables Supply

主旨 Subject: 本公司擬於海能風場周圍安裝測波浮標，檢送安裝資訊如附檔，敬請貴局協助發布航船布告。 Submit the wave buoy information which will install near Formosa 2 wind farm, please help to issue a marine notice

說明：

- 一、本公司預計於 110 年 8 月 18 日至 111 年 12 月 31 日於海能風場周圍安裝一座測波浮標，預計安裝點位有四，將依照施工所需於四個點位中移動浮標位置。
- 二、檢送測波浮標安裝資訊如附檔，敬請貴局協助發布航船布告。

Dear Sir,

Jan De Nul n.v plans to install the wave buoy near Formosa 2 wind farm from 18 August 2021 to 31 December 2022. There are four expected installation locations, and the positions of the buoy will be moved among the four locations according to construction needs.

Please find the attached files the wave buoy information, and help to issue a marine notice.

Yours faithfully,

JAN DE NUL N.V. TAIWAN BRANCH

Bert Drofman  
Contractor Representative

交通部航港局



中部航務中心 1103201469

110. 8. 05

0158.L.JDN3973.MOTC.ADRI

1/1  
REGISTRATION NUMBER 5436649

## 1.0 作業位置 OPERATION AREA

### 1.1 作業區域 LAYOUT OF SITE

下圖1可見其風場範圍（橘色與綠色框線內），關於此區之座標請詳見表2。  
Survey area as shown in below picture 1 (outlined with orange and green).

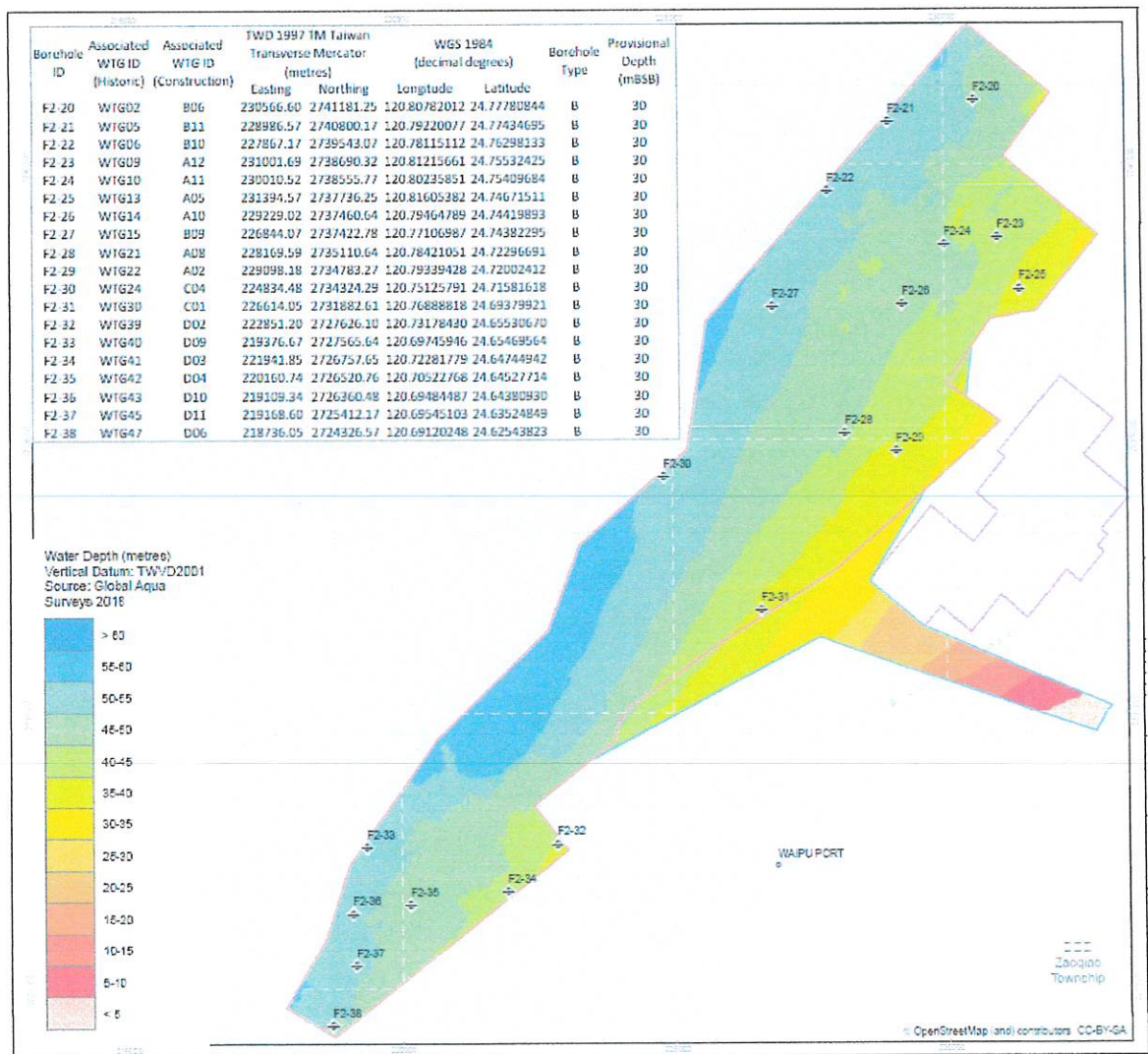


Figure 1 : Offshore Windfarm boundary and survey boundary



## 1.2 風場邊界座標資訊 COORDINATE OF SITE BOUNDARY

詳細座標如下表所示。The coordinate information is as below.

編號 (No.)	TWD 97		WGS 84 (deg, deg)		WGS 84 (deg, min, sec)	
	E	N	E	N	E	N
C1	217872.89	2724643.02	120.682670	24.628277	120°40'57.61"	24°37'41.79"
B2	218777.04	2724108.93	120.691612	24.623474	120°41'29.8"	24°37'24.5"
B1	223051.42	2727512.60	120.733765	24.654285	120°44'1.55"	24°39'15.42"
C2	222420.02	2728313.81	120.727511	24.661508	120°43'39.03"	24°39'41.42"
A13	223918.65	2729494.82	120.742295	24.672197	120°44'32.26"	24°40'19.9"
A14	223968.13	2729800.37	120.742779	24.674957	120°44'34"	24°40'29.84"
A15	224159.06	2730083.03	120.744660	24.677512	120°44'40.77"	24°40'39.04"
A16	225741.48	2731201.52	120.760277	24.687636	120°45'36.99"	24°41'15.48"
A17	228006.96	2732629.73	120.782642	24.700565	120°46'57.51"	24°42'2.03"
C3	231031.62	2735304.39	120.812498	24.724754	120°48'44.99"	24°43'29.11"
C4	230033.37	2736007.16	120.802621	24.731086	120°48'9.43"	24°43'51.9"
A22	230863.75	2737186.68	120.810813	24.741747	120°48'38.92"	24°44'30.28"
A23	231711.18	2737333.89	120.819189	24.743086	120°49'9.08"	24°44'35.1"
A26	232857.59	2738717.59	120.830506	24.755592	120°49'49.82"	24°45'20.13"
A27	231116.90	2740145.99	120.813276	24.768468	120°48'47.79"	24°46'6.48"
A28	231996.72	2741308.46	120.821961	24.778974	120°49'19.05"	24°46'44.3"
5-12	230451.67	2742576.32	120.806664	24.790402	120°48'23.99"	24°47'25.44"
5-11	225622.66	2737153.28	120.758999	24.741371	120°45'32.39"	24°44'28.93"
5-10	225260.72	2734817.01	120.755462	24.720272	120°45'19.66"	24°43'12.97"
5-9	223280.88	2733067.65	120.735926	24.704444	120°44'9.33"	24°42'15.99"
5-8	222685.42	2731509.97	120.730071	24.690370	120°43'48.25"	24°41'25.33"
6-17	220684.84	2729561.41	120.710342	24.672740	120°42'37.23"	24°40'21.86"
6-16	219041.03	2727242.50	120.694151	24.651771	120°41'38.94"	24°39'6.37"
6-15	218617.86	2725904.15	120.689999	24.639679	120°41'23.99"	24°38'22.84"

Table 1 : Coordinate of Site Boundary

### 1.3 預計安裝位置

The coordinate information is as below. 詳細座標如下表所示。

編號(No.)	Latitude WGS84 LL	Longitude WGS84 LL
1.	24° 42' 29.46250"N	120° 50' 11.30999"E
2.	24° 46' 13.23965"N	120° 46' 49.78046"E
3.	24° 43' 07.60934"N	120° 44' 45.58667"E
4.	24° 41' 13.21870"N	120° 43' 09.18512"E

Table 2: Locations of wave buoy

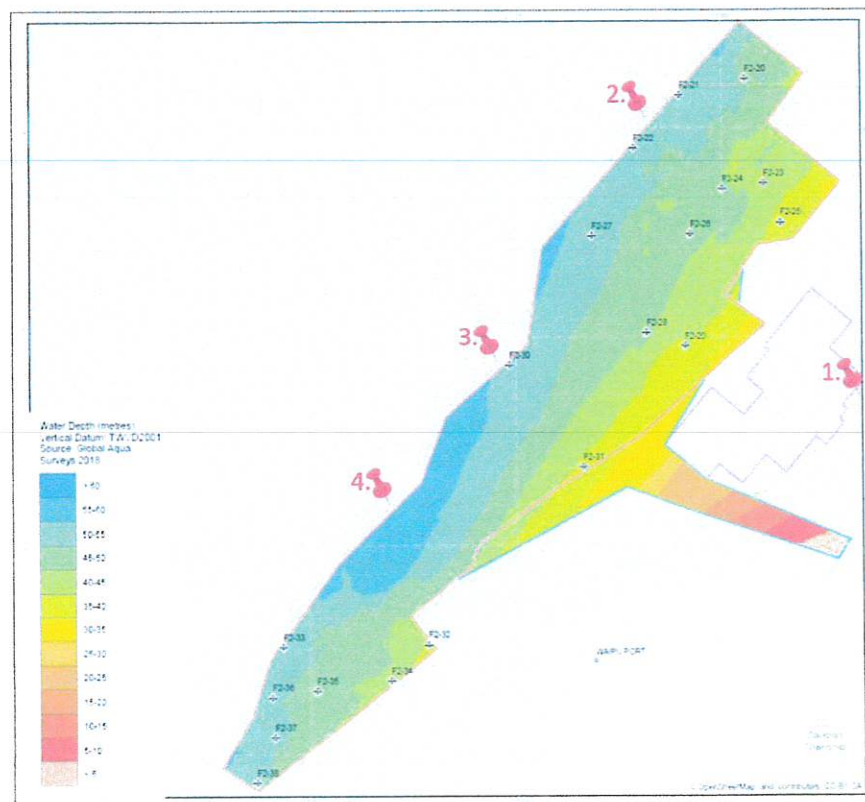


Figure 2: Locations of wave buoy

## 2.0 船舶基本資料 VESSEL INFORMATION

船名 Vessel Name	MMA Crystal
船籍港 Home Port	SINGAPORE
總噸數 Gross Tonnage	2,763 ton
船長 LOA	70.05m
船寬 Width	17.00m
IMO	9594212
MMSI	565399000



Figure 3 : Photo of MMA Crystal

### 3.0 浮標規格 SPECIFICATION

Item	設備 Equipment	型號 Specification	用途 Purpose
1.	Wave buoy	燈光顏色:橘色 / 燈光頻率: Fl 浮球顏色: 黃 Colour of light: orange Freq. of light: Fl Colour of buoy: yellow	Current measuring



Figure 3: Photo of wave buoy



#### 4.0 作業期間 OPERATION PERIOD

作業期間 Operation Period	預計開始日 Start Day	預計完成日 End Day
浮標安裝 Buoy installation	18/08/2021	31/12/2022

備註 Comment:

上列作業時間及作業內容供參考(實際作業期間將隨作業進度及海象而調整)

The above is for information only. The actual schedule will be changed as the weather and situation dictates

## 5.0 聯絡資訊 CONTACT INFORMATION

工 程 公 司 Contractor				Jan De Nul	
職位 Position	公司 Company		姓名 Name	電話 Mobile Phone	
Superintendent	JDN		Giliam Agten	+886 928 937 839	
			Wout Coessens	+886 928 937976	
			Cedric Dhont	+886 933 758638	
船舶聯絡人 Vessel Contact					
船名 Vessel	職位 Position	公司 Company	姓名 Name	電 話 Phone	Mobile
MMA Crystal	Bridge team	MMA	Duty Phone	+886 916 012 953	